



1485 Baseline Rd #515, Ottawa, Ontario K2C 3L8

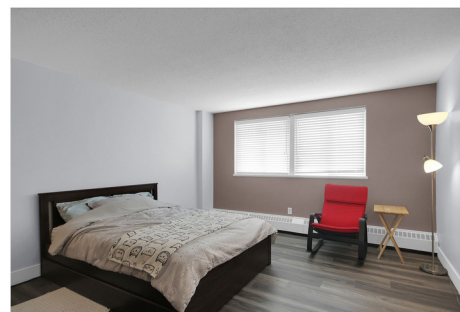
Condominium • Apartment • Beds: 1 • Baths: 1 • MLS®: X12285900
Taxes: \$2,228.53 / 2025 • Sq. Footage: 850 ft • Condo Fee: \$654.28 / Month

\$279,900



PROPERTY DESCRIPTION

A rare one-bedroom condo located in the highly sought-after Manor Square in Copeland Park. Move-in condition. Kitchen was renovated in 2020. Bathroom has also received recent renovations. Newer laminate flooring in the living room, dining room, and bedroom. Tasteful paint in neutral colours throughout. The south-facing view bathes the unit in natural light. One indoor parking spot and storage locker included. This well-run apartment features top-tier amenities: indoor and outdoor pools, sauna, billiards room, party room, workout centre, workshop and more. It's close to everything! Shopping, restaurants, public transit, and essential services are all within walking distance. Condo fees cover heat, hydro, and water.



View virtual tour at [VISUAL4SALE.COM](https://visual4sale.com) Enter V4S# 357941



James Kenny
Sales Representative
613-596-5353

Direct Cell Number:
613-614-8685

jameskenny@remaxottawa.com
www.teamkenny.ca



Remax Hallmark Realty Group (Ottawa)
2255 Carling Ave #204, Ottawa K2B 7Z5



All information regarding this property, either expressed or implied, is from sources deemed reliable and assumed to be correct. No Warranty thereof and same is submitted to possible errors and omissions. Not intended to solicit those under agency contract.