



# 1485 Baseline Rd #903, Ottawa, Ontario K2C 3L8

Condominium • Apartment • Beds: 2 • Baths: 1 • MLS®: X12393471

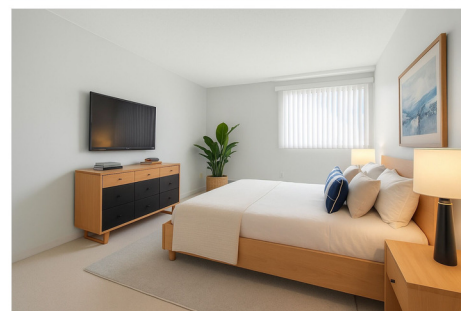
Taxes: \$2,308 / 2024 • Condo Fee: \$744.23 / Month

**\$285,000**



## PROPERTY DESCRIPTION

Bright and clean two-bedroom condo in Manor Square, part of the well-managed Century Manor Towers in Copeland Park. The unobstructed north-facing view fills the space with natural light. Renovated bathroom. Wall-to-wall carpeting throughout. Fridge and stove included. Condo fees include heat, hydro, and water. Comes with an indoor heated parking space and a storage locker. Manor Square offers exceptional amenities: indoor and outdoor pools, sauna, fitness centre, billiards and party rooms, workshop, and more. It's close to everything! Shopping, restaurants, public transit, and essential services are all within walking distance. Please note some photos are digitally staged.



View virtual tour at [VISUAL4SALE.COM](https://visual4sale.com) Enter V4S# 358996



**James Kenny**  
Sales Representative  
**613-596-5353**

**Direct Cell Number:**  
**613-614-8685**

[jameskenny@remaxottawa.com](mailto:jameskenny@remaxottawa.com)  
[www.teamkenny.ca](http://www.teamkenny.ca)



**Remax Hallmark Realty Group (Ottawa)**  
2255 Carling Ave #204, Ottawa K2B 7Z5



All information regarding this property, either expressed or implied, is from sources deemed reliable and assumed to be correct. No Warranty thereof and same is submitted to possible errors and omissions. Not intended to solicit those under agency contract.