

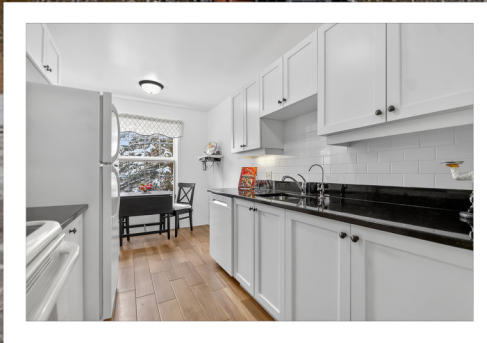
40 Pearl Street, Smiths Falls, Ontario K7A 5B5

Condominium • Apartment • Beds: 2 • Baths: 2 • MLS®: 3407240 • Year Built: 1989
Taxes: \$3,511.01 / 2026 • Sq. Footage: 1005 ft • Condo Fee: \$290 /

View virtual tour at
VISUAL4SALE.COM
Enter: V4S#361144



\$349,900



Glenda Brindle
Broker
613.831.9287

Direct Cell Number:
613-859-4062

gbrindle@magma.ca
www.glendabrinde.com



Royal LePage Team Realty
Brokerage Independently
Owned and Operated
12B-6081 Hazeldean Road
Ottawa, Ottawa K2S 1B9



All information regarding this property, either expressed or implied, is from sources deemed reliable and assumed to be correct. No Warranty thereof and same is submitted to possible errors and omissions. Not intended to solicit those under agency contract.