



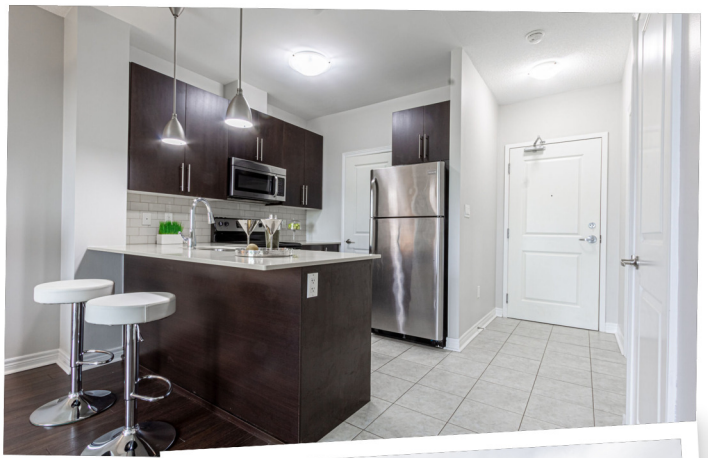
# 422 - 33 Whitmer St, Milton, Ontario L9T 8P9

Condominium • Condominium Apartment • Beds: 1+1 • Baths: 1 • MLS®: W11931341  
Taxes: \$2,148 / 2024 • Sq. Footage: 673 ft • Condo Fee: \$241.74 /

## \$570,000

### Property Features

- Geothermal Heating/Cooling
- Westerly Escarpment Views
- Close to downtown Milton
- Stainless Steel Appliances
- Breakfast Bar
- Balcony off Living Room
- Laminate Flooring Throughout
- Owned Parking and Locker
- Freshly Painted
- Underground Parking



View virtual tour at [VISUAL4SALE.COM](http://VISUAL4SALE.COM) Enter V4S# 351496



**James Micallef**  
Sales Representative  
905-568-2121

**Direct Cell Number:**  
9055992280

[jamesmicallef@royallepage.ca](mailto:jamesmicallef@royallepage.ca)  
[www.jamesmicallef.com](http://www.jamesmicallef.com)



**Royal LePage Signature Realty  
Brokerage**

200 - 30 Eglinton Ave. W., Mississauga L5R3E7

